

Fannin County Regional Trails Master Plan

TETRA Presentation

Jan. 8, 2022

Introduction

- The Plan Itself
- Who Needs a Plan?
- Spotting the Opportunity
- Resources
- Building the Plan
- What's next

Duke Monson – duke.fhollow@earthlink.net

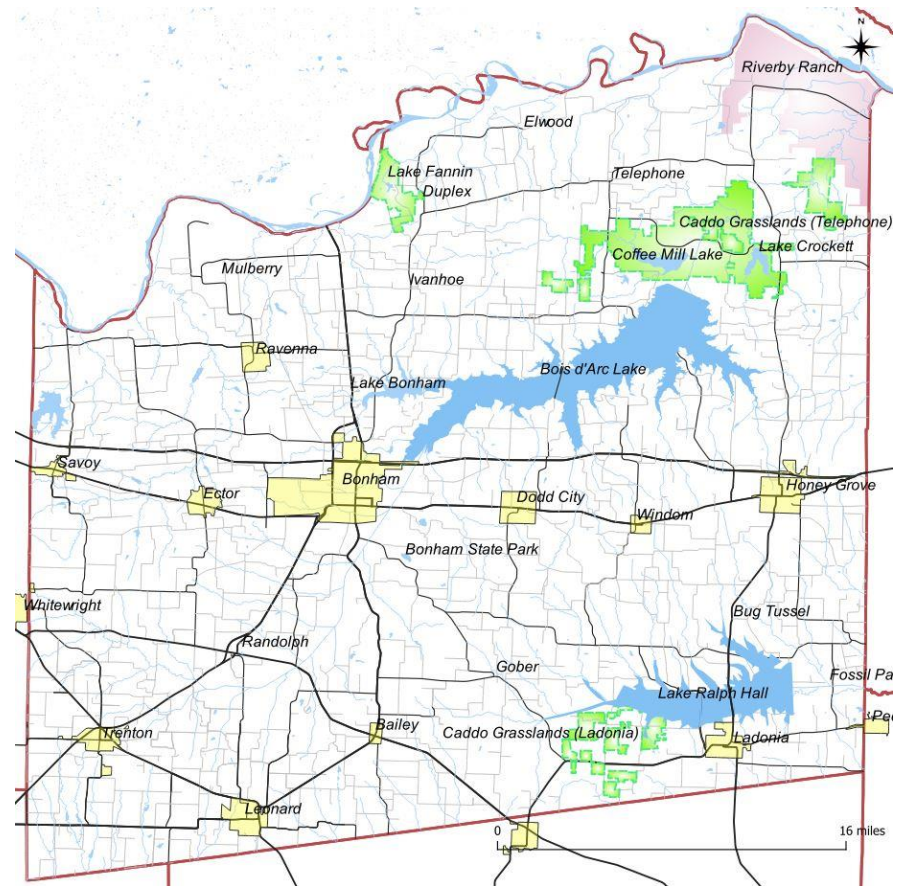
Google Drive - https://drive.google.com/drive/folders/182t0Gd2F6xxxtDr9_XF2IWLEPpB-wmu7?usp=sharing

FCRTMP – TETRA Presentation

The Plan – Adopted Nov. 2, 2021

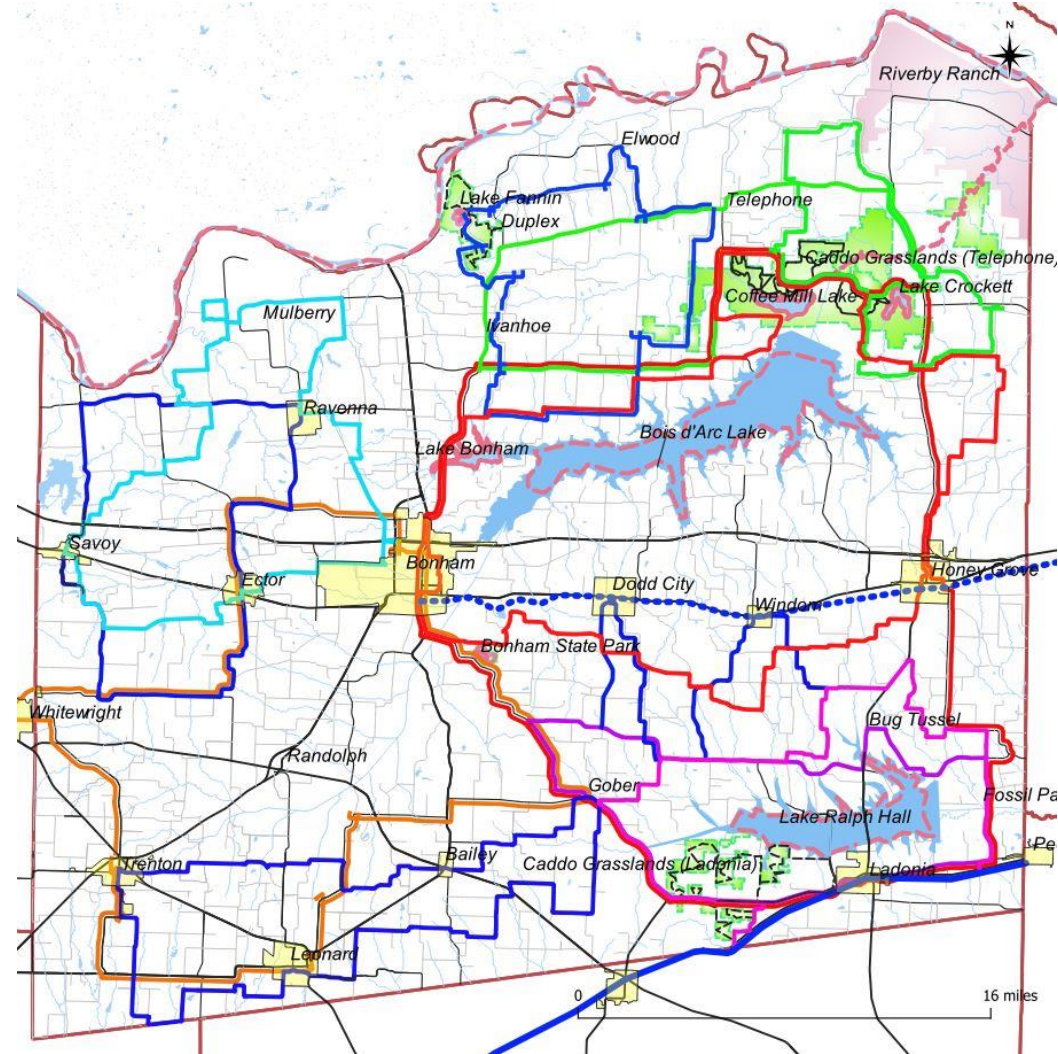
Fannin County – 900+ square mile, 34,000+ residents, 11 cities

- Current Trails – 72+ miles
 - Kayak/Canoe on Existing Lakes
 - Equestrian/Hiking
 - Caddo Grasslands (Telephone)
 - Gravel Bike/Equestrian/Hiking
 - NETT (Ladonia)
 - Mountain Biking
 - Lake Fannin
 - Bonham State Park
- Plan Addresses multiple trail types
 - Water
 - Bicycle (road/gravel/mtn bikes)
 - Equestrian/Hiking
 - ADA
 - Carriage



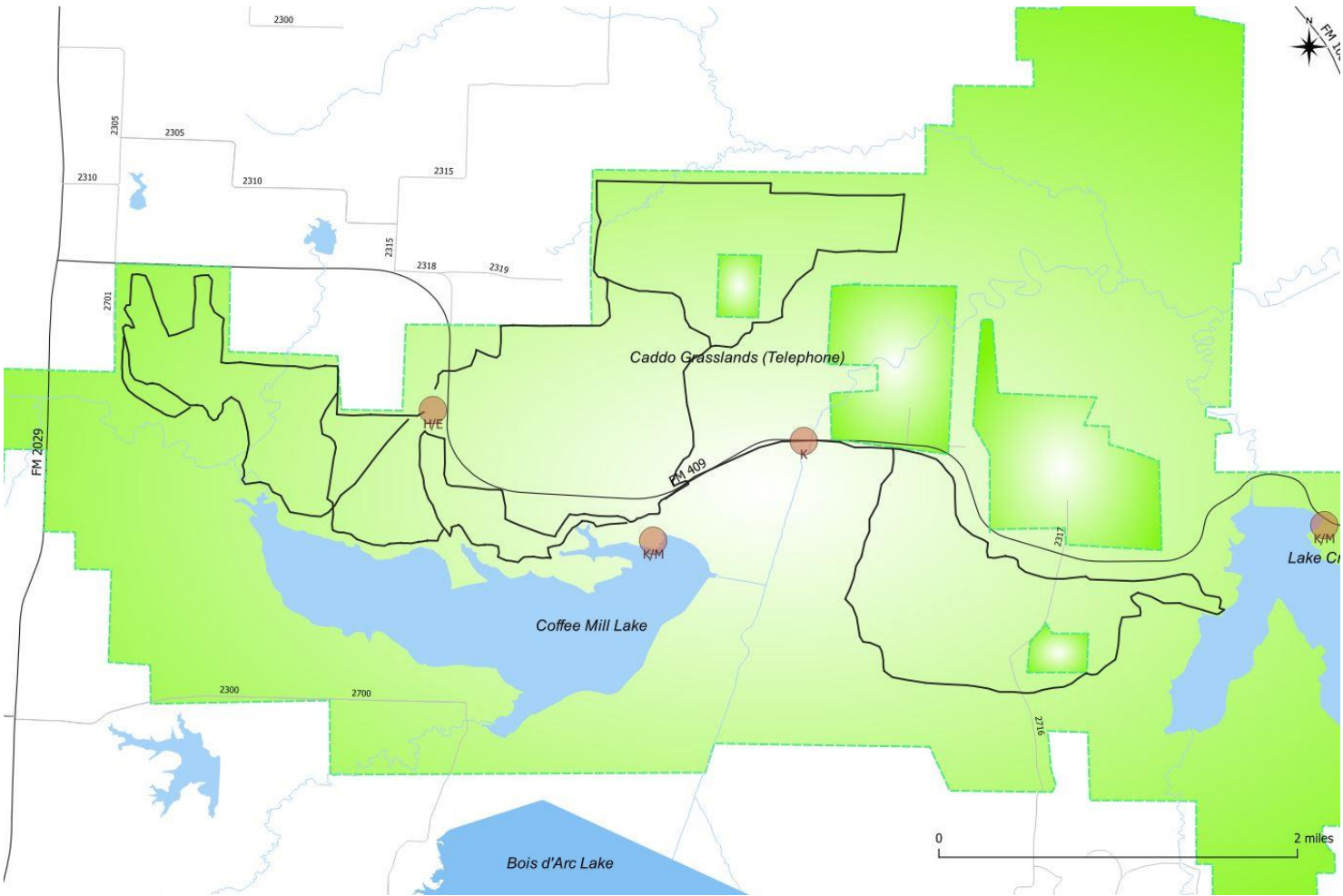
FCRTMP – TETRA Presentation

- Proposed Trails – approx. 800 miles
 - Kayak/Canoe
 - Red River/Bois d’Arc Creek
 - Existing Lakes
 - New Lakes
 - Bois d’Arc Lake
 - Lake Ralph Hall
 - Equestrian/Hiking
 - Caddo Grasslands
 - Lake Fannin
 - Telephone
 - Ladonia
 - Gravel Biking/Equestrian/Hiking
 - NETT
 - County Roads
 - Road Biking
 - FM Roads/State Highways
 - Mountain Biking
 - Lake Fannin
 - Bonham State Park
 - ADA Trails – Lake Fannin
 - Carriage Driving – Riverby Ranch



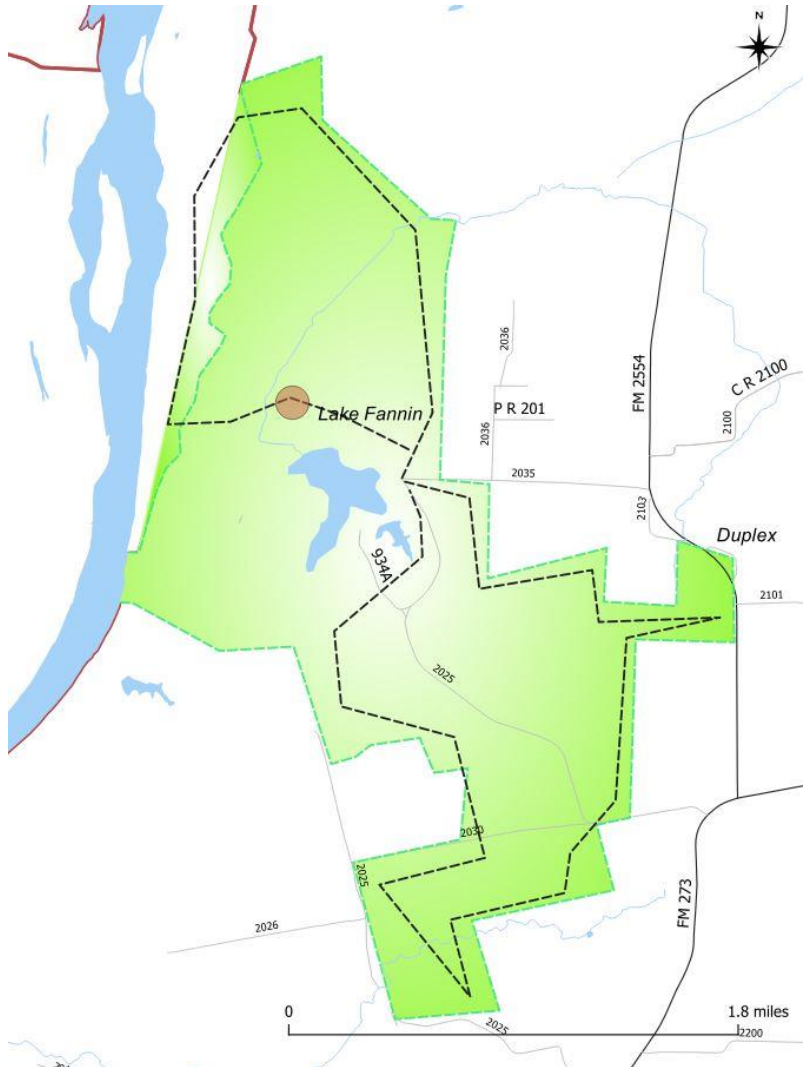
FCRTMP – TETRA Presentation

Caddo Grasslands – Telephone – 29+ miles



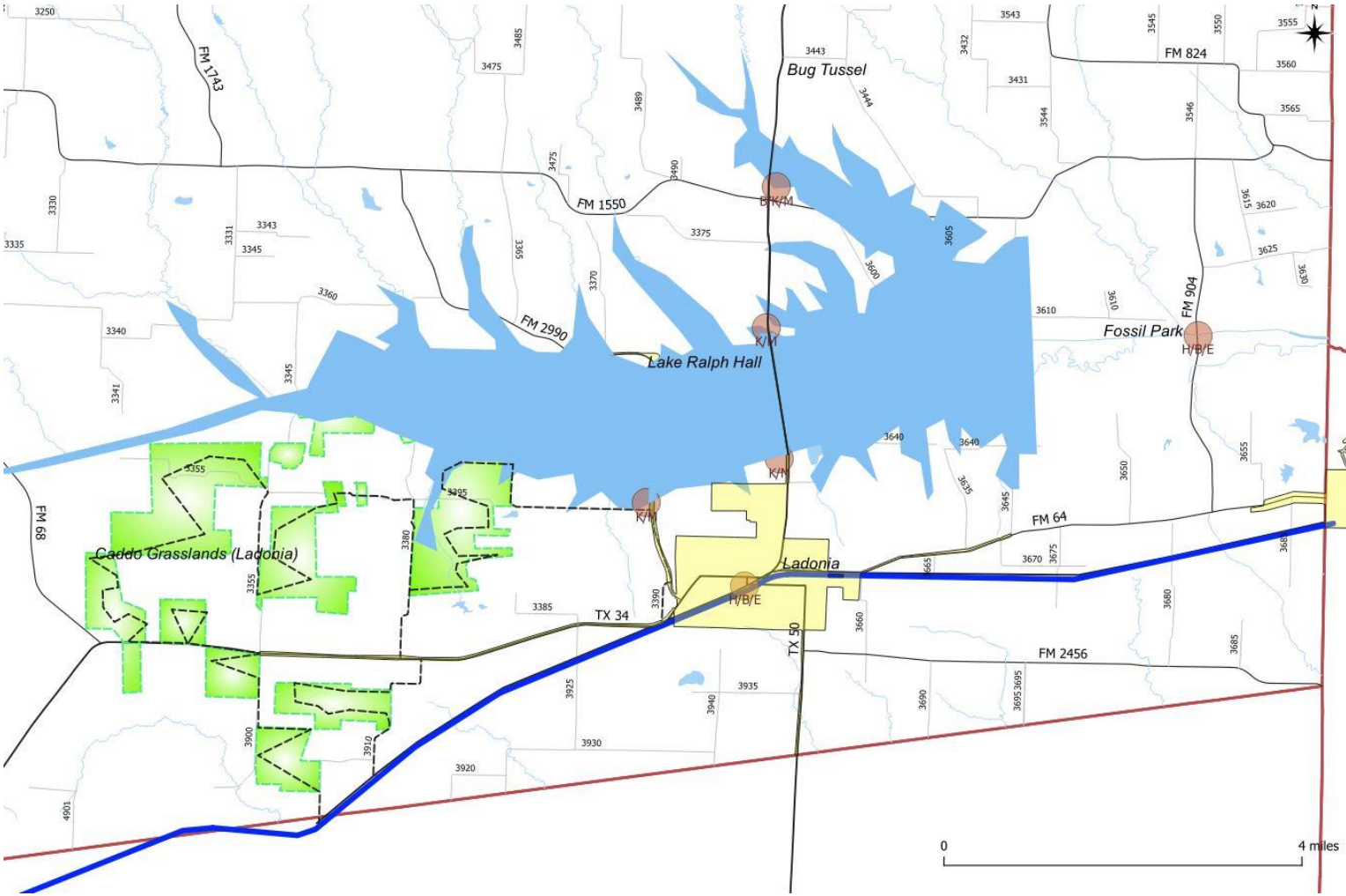
FCRTMP – TETRA Presentation

Caddo Grasslands – Lake Fannin – 10+ miles



FCRTMP – TETRA Presentation

Caddo Grasslands – Ladonia – 36+ miles



FCRTMP – TETRA Presentation

- Who Needs a Plan?
 - Why is a plan useful
 - Who relies on the plan
 - What should the plan cover
 - Multi-jurisdictional, Multi-use, Shared Infrastructure
- Spotting the Opportunity
 - At a Trail building class
 - Advocated for trails in the Bois d'Arc Lake Zoning Plan
 - Volunteered to create the plan at no cost to the County
- Resources
 - I used the Collin County RTMP document as a base
 - Professional vs Amateur – Cost, Quadrants vs trail-specific
 - Content
 - TIGER line/shapefiles, Google Earth, Gaia GPS
- Building the Plan
 - Interview the land managers
 - County Commissioners and County Judge
 - Water Districts
 - TP&W
 - USDA Forest Service

FCRTMP – TETRA Presentation

- Building the Plan - con't
 - Track down and Interview the enthusiasts
 - Select Tools – QGIS, Gaia GPS, Word
 - Identify trail locations by use type
 - Lay out the trail Routes
 - Hold Public Meetings – fielding the questions
 - Shake down all the inputs
 - Take it to the Commissioners Court for approval
- What's next
 - Staff the Trail Advisory Committee
 - Prioritize the trail projects
 - Build and execute each of the trail projects in turn
 - Design
 - Find Funding
 - Build the Trail
 - Use it – At LAST!!!!